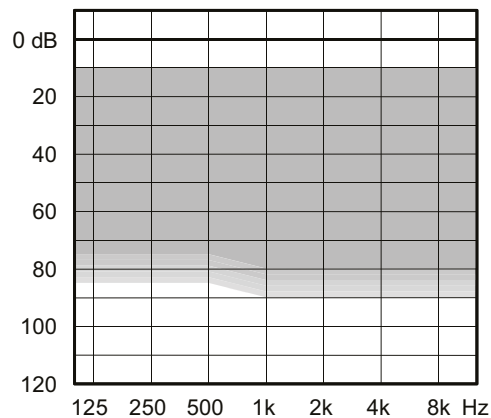


# CIC Completely-in-canal

## 15/10E/10/6E/6/4E/4



Fitting range



Minimal to severe hearing losses

Key features	15	10E	10	6E	6	4E	4
Processing channels	15	10	10	4	4	4	4
Acoustic Situation Technology	9 (Linked)	5 (Linked)	3	1	1	1	1
Adaptive fast slow compression	•/Linked	•/Linked	•/Linked	•	Classic	Classic	Classic
Programs	5	4	3	3	3	3	1 (3*)
Volumen control II	•	•	•	•	•	•	•
Standard Noise Reduction	•	•	•	•	•	Minimal	Minimal
Zen	Linked	Linked	Linked	•	•	•	
Wireless CROS compatible	•	•	•	•	•	•	
Linear frequency transposition	•	•	•	•			
Ambient Noise Reduction	•	•	•	•			
Impulse Noise Rejection II	•	•	•				
Linked Speech Enhancer II	•/Linked	•					
High frequency boost	•						

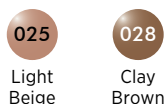
**Accessories**

App for iPhone, Android and new functionality	Via COM-DEX	Via COM-DEX	Via COM-DEX	Via COM-DEX	Via COM-DEX		
DEX accessories	•	•	•	•	•	RC-DEX/TV-DEX**	

\*3 programs when machted with a hearing aid with program button \*\*Quick match only

Protection Class IP58

**Colours**



# CIC Completely-in-canal

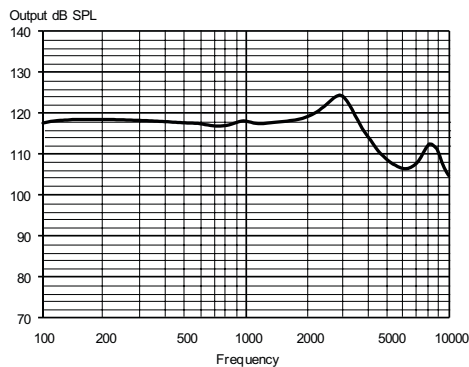
## 15/10E/10/6E/6/4E/4

### Technical data

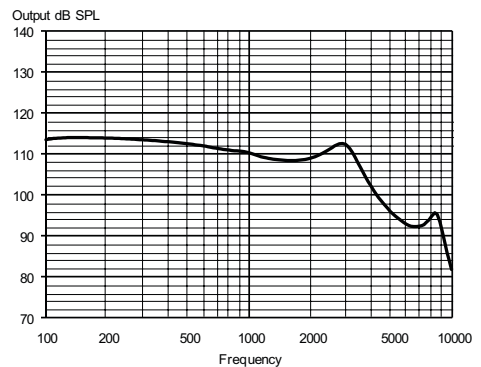
	EAR SIMULATOR IEC 60118-0:1983 + A1:1994		2CC COUPLER IEC 60118-0:2015, ANSI S3.22-2014	
OSPL90	1600 Hz	118	109	dB SPL
	Peak	124	114	dB SPL
	Average	118	110	dB SPL
Acoustic output (Input 60 dB SPL)	1600 Hz	103	94	dB SPL
	Peak	108	97	dB SPL
	Average	99	93	dB SPL
Full-on gain (Input 50 dB SPL)	1600 Hz	62	53	dB
	Peak	63	57	dB
	Average	61	52	dB
Acoustic frequency range		100 - 9700	100 - 8800	Hz
Harmonic distortion (Input 70 dB SPL)	500 Hz	<2	<2	%
	800 Hz	<2	<2	%
	1600 Hz	<2	<2	%
Equivalent input noise		25	26	dB SPL
Battery current (stand by)		0.91	0.91	mA
Battery current		0.93	0.95	mA
Battery life (Type 10 Zn-Air, 100 mAh)		105	105	h
Mobile phone immunity (IEC 60118-13:2016, ANSI C63.19:2011)		IRIL: -32/-22/-16 dB SPL	U-rating: M4	

Typical data obtained through standard pure tone measurements. Hearing aid set to Reference Test Gain, unless stated otherwise. Measured using a standard ITE coupler without wax guard, and with a 5 x 1.55mm tube.

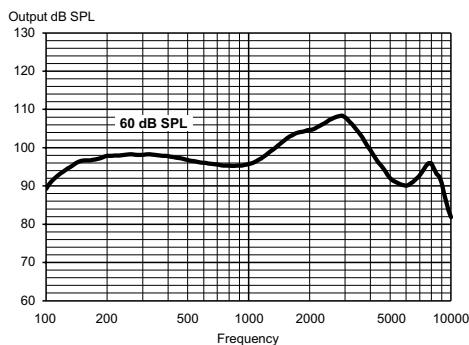
MAXIMUM OUTPUT - EAR SIMULATOR



MAXIMUM OUTPUT - 2CC COUPLER



OUTPUT - EAR SIMULATOR



OUTPUT - 2CC COUPLER

